



# FACADE CLADDING

System Solutions for Facades



SYSTEM OVERVIEW



## Foreword

If the best material curtails creativity, what good is it? If the best idea cannot be realized, what good is it? Materials that foster creativity and lend form to ideas are required for individual solutions, as are consulting services that take technical perfection, structural physics and aesthetics into consideration.

RHEINZINK offers all of the above. Not only does the name stand for unique creative material to clad roofs and facades, but also for exemplary service to implement your ideas – regardless of the size of your project – big or small. We offer solutions that are as unique as your project. A comprehensive range of RHEINZINK facade and roofing products, along with diverse installation techniques, make it easy to find a perfect solution for every design.

RHEINZINK is extremely malleable; it is compatible with every architectural environment and its aesthetic is timeless. Furthermore, requirements for sustainable building using natural material are met without difficulty. RHEINZINK is absolutely maintenance and service free. Its lifetime comprises several generations and that, in and of itself, sets standards; its ecological balance is exemplary.

The examples in this brochure illustrate the design potential of RHEINZINK, along with various options available to you by using this ecological material.

Datteln, November 2017







TRUMPF Sachsen GmbH, Neukirch, Germany



New Lecture Hall, Victoria University,  
Werribee Campus, Werribee, Australia



RHEINZINK-Crystal Tile

### RHEINZINK-Flat-Lock Tile System

Flat-lock tiles are used primarily for large facade areas. This is where the visual effect is the most impressive. By using different sizes of tiles and by changing up the layout of the seam lines, the planner has many options for facade designs. RHEINZINK-Flat-Lock Tiles are available in RHEINZINK-prePATINA blue-grey and graphite-grey preweathered versions, as well as in the RHEINZINK-CLASSIC bright rolled version. The bright rolled version opens up additional design potential; natural weathering of this material enhances the nuance of colour of each individual tile, creating a very special effect. For quality assurance and optimal material usage efficiency custom production is recommended. We produce flat-lock tiles on demand in the surface quality RHEINZINK-art-COLOR.

- Individual tile sizes
- High degree of design freedom
- Standard surface qualities  
RHEINZINK-CLASSIC bright rolled,  
RHEINZINK-prePATINA blue-grey  
and graphite-grey
- Environmentally declared product

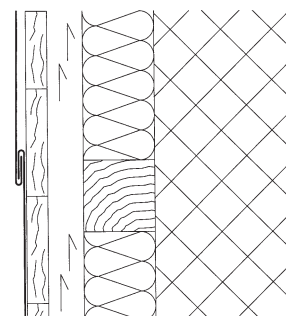


Fig. Cover Page: Operations Building, Montegranaro, Italy

Fig. left: Observation Tower, Haenam Gun, Jeon-Nam Province, Korea





Olympic Stadium, Jinan, China



Head Offices of Berlinwasser Holding AG, Berlin, Germany

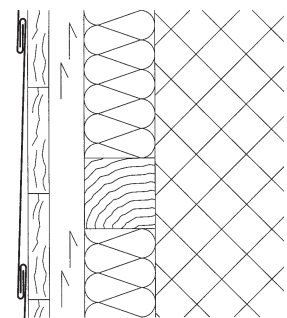
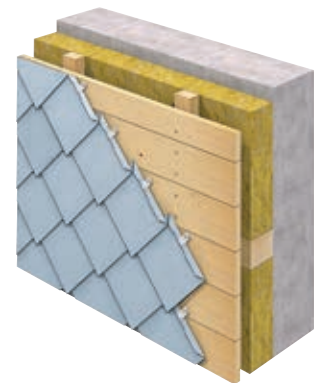


Sir Colin Campbell Building, University of Nottingham, Great Britain

## RHEINZINK-Small Tile System

Square and diamond-shaped tiles make up RHEINZINK's small tile group. Contrary to sheets or shingles, these tiles have forward facing edges on the top surface and backward facing edges on the lower surface to form simple lock joints. The small format of these tiles permits secure and aesthetically pleasing solutions to be realized, particularly for geometrically complicated buildings. Virtually all corners and curves can be accommodated. Dormer, chimney head and roof edges are some of the more conventional applications for small tiles.

- Available in various sizes
- Flexible adaptation to building shapes
- Standard surface qualities  
RHEINZINK-CLASSIC bright rolled,  
RHEINZINK-prePATINA blue-grey  
and graphite-grey
- Durable and maintenance free





*Zinkhaus, Copenhagen, Denmark*



*Perth Convention & Exhibition Centre,  
Perth, Australia*

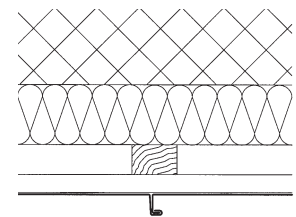


*Villa, Prague, Czech Republic*

## **RHEINZINK-Standing Seam System**

RHEINZINK seam systems join individual panels longitudinally. The angled standing seam is used primarily for facade claddings. Its distinguishing feature is the bold accentuation of its seams (ca. 12 mm width). A variety of panel lengths and widths, allows even the most elaborate shapes to be realized using seam technology. The availability of machines guarantees efficient and consistent forming of panels and closing of seams. We produce seam systems on demand in the surface quality RHEINZINK-art-COLOR.

- Suitable for almost every building shape or style
- A variety of panel widths is available
- Standard surface qualities  
**RHEINZINK-CLASSIC** bright rolled,  
**RHEINZINK-prePATINA** blue-grey  
and **graphite-grey**
- Little or no maintenance or service required







*Private Residence, Cantù, Italy*



*Telenor, Fornebu, Norway*

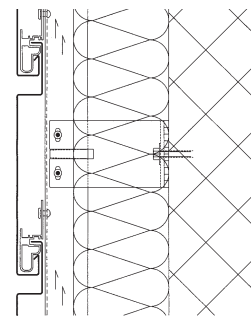
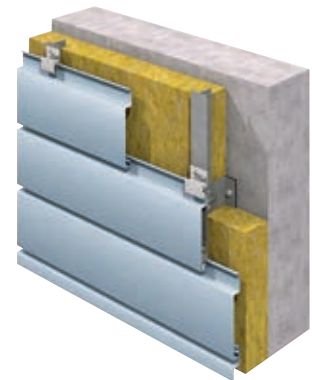


*FERl, Maribor, Slovenia*

### **RHEINZINK-Horizontal Panel System**

Horizontal panels are similar to reveal panels in appearance. The panels are fabricated with flanges to close their ends; they are attached indirectly via a precisely-defined 20 mm joint, using a special RHEINZINK-Cast Fixing Clip. This ensures that thermal expansion can be accommodated without any difficulty. We produce horizontal panels on demand in the surface quality RHEINZINK-artCOLOR.

- Horizontal facade segmentation
- Panels are available in various widths
- Sliding fastening system
- Standard surface qualities  
**RHEINZINK-prePATINA**  
blue-grey and graphite-grey
- Panel lengths of up to 6,0 m are available







*Private Residence, Schmerlitz, Germany*



*Apartment Building and Business Center, Lehrte, Germany*

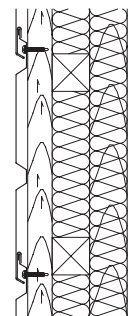
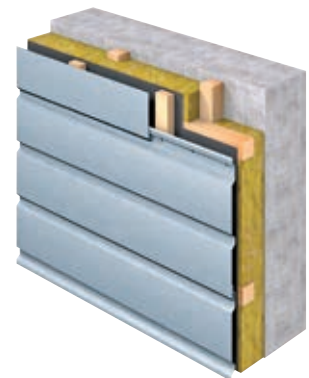


*Multiple Dwelling, Neumünster, Germany*

## RHEINZINK-SP-Line

New and innovative, the SP-Line is a complete system. It consists of a basic panel and prefabricated adjustable flashings; it can be installed both horizontally and vertically. One panel is plugged into the other. "Random designs", uniform seam patterns and "installation using slave profiles" can be realized without difficulty and without waste. Details are solved efficiently and economically. The modern look of the RHEINZINK-SP-Line is impressive; it is a very reasonable, yet high quality alternative to wood, stone and synthetic materials.

- Simple planning and installation
- Complete modular system
- Uniform seam grid
- Made of RHEINZINK-prePATINA blue-grey





*Train Station Passageway, Uster, Switzerland*



*Private Residence, Empel, Netherlands*

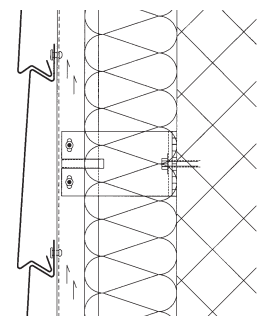


*MG AVU Galerie der modernen Kunst  
Akademie bildender Kunst, Prague,  
Czech Republic*

## RHEINZINK-Shiplap Panel System

Due to its layered characteristics and shadowless joint, the shiplap panel is a particularly unique facade cladding, reminiscent of wooden facades. When exposed to light and shade, interesting shadows and sharp contours appear because of its profile geometry. Precision profile manufacturing (in accordance with detailed planning and pre-defined panel dimensions) guarantees efficient and optimum installation on site. We produce shiplap panels on demand in the surface quality RHEINZINK-art-COLOR.

- Layered sheath look
- A variety of panel widths are available.
- Standard surface qualities  
RHEINZINK-prePATINA  
blue-grey and graphite-grey
- No maintenance or painting







*Columbarium, De Nieuwe Ooster Begraafplaats, Amsterdam, Netherlands*



*Theater am Marienort (previously: Les Misérables), Duisburg, Germany*



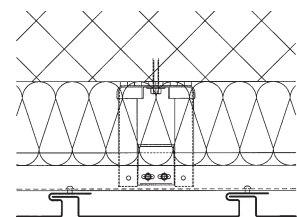
*Yellow Square, Lyon, France*

### **RHEINZINK-Reveal Panel System**

The benefit of the reveal panel is the choice of cover widths (200-333 mm) and variable joint widths of 0-30 mm. With the flexibility of vertical and diagonal installation, the reveal panel offers the architect an exceptional amount of freedom in implementing their design ideas. Configured panels with an extremely wide range of shapes can be realized. Therefore, permanent quality solutions can be implemented very quickly when it comes to renovations or retrofitting insulation.

We produce reveal panels on demand in the surface quality RHEINZINK-art-COLOR.

- **A panel system, with different visual effects**
- **Choice of cover and joint widths**
- **Standard surface qualities**  
**RHEINZINK-prePATINA**  
**blue-grey and graphite-grey**
- **Environmentally declared product**







*Facade design with random structure, elements from 250 mm to 1000 mm*



*Modular design with defined 20 mm joint*

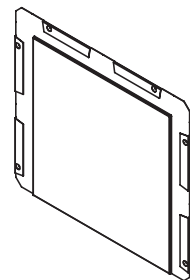
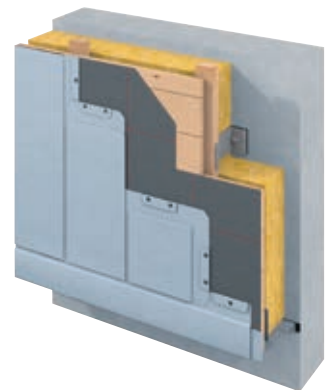


*Base planning grid 250 mm*

## RHEINZINK-ART-Line

The name ART-Line represents a new, modular RHEINZINK facade system, composed of six differently-sized modules. These modules can be combined with any of the others; the multitude of variations offers you countless possibilities for graphic, linear facade design. The flush look guarantees a refined overall impression.

- **Complete modular system**
- **Individually-combinable standard formats**
- **For variety in facade design**
- **Flush appearance – concealed fastening**
- **Standard surface quality RHEINZINK-prePATINA blue-grey**





*Jansen Campus, Oberriet, Suisse*



*Ergo Arena Sopot, Gdańsk, Poland*



*SHV SullnerHaus Vorarlberg, Sulz, Austria*

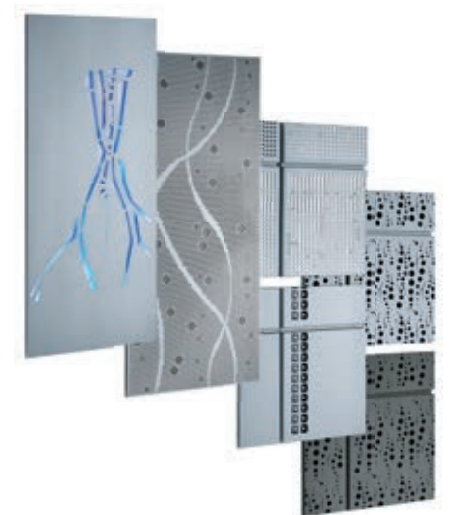
### Surface Design with RHEINZINK

RHEINZINK facade systems have been tried and tested on the international architecture scene. The structured design is pleasing to the eye in a special way. Folds, curves, imprints and cut-outs create a sense of three dimensionality and unveil an extraordinary plastic effect which draws attention to the architecture. Even more fascinating is when natural or artificial lighting comes in to play. This creates special effects that stage or even dramatize parts or all of the building. Facades communicate, ideas become visible, and buildings come alive. With the structured RHEINHOLDT-Facade System, even dominant buildings can attain a unique image.

### You have the Idea – we have the Solution

The designs shown here provide an example of the numerous personalised options that are available in line with the surface designs from RHEINZINK-CLASSIC and RHEINZINK-prePATINA.

If you have a visionary idea or are looking for a practical solution, give us a call. Please also contact us for project related sampling. We will pursue your idea.





## ONE BRAND – 3 PRODUCT LINES

**A perfect solution  
for every requirement**

To give you even more design freedom, we offer our material in three different product lines and in numerous finishes. You get the perfect solution for every requirement with the trusted RHEINZINK quality. All products exceed the high standards of EN 988 and the TÜV QUALITY ZINC criteria. The high level of manufacture is guaranteed by constant inspections and extensive laboratory tests. On this double page, we have summarised the characteristic features of our three product lines. On request, we will gladly send you samples of material.

## RHEINZINK-CLASSIC

**The natural material  
in its most original form**

RHEINZINK-CLASSIC is the most original of all material options. The bright rolled version has proven itself for over 50 years of application. Depending on the weather conditions, over time a typical blue-grey patina is formed on the naturally shiny metallic surface. The patina gradually becomes more and more distinctive and develops a unique surface character.

### Surface quality:

RHEINZINK-CLASSIC® bright rolled

## RHEINZINK-artCOLOR

**Unlimited design in a variety of  
colours**

RHEINZINK-artCOLOR is the coloured version for roofing and facade cladding. A durable coating allows a wide range of colours and opens up a variety of design options for architects, planners, builders and trade customers. Classically elegant, contemporary avant-garde, contrasting or tone-on-tone. If you have a special colour requirement, we will be happy to produce RHEINZINK-artCOLOR in the shade of your choice.

### Surface qualities:

RHEINZINK-artCOLOR® black-grey  
RHEINZINK-artCOLOR® pure-white  
RHEINZINK-artCOLOR® pearl-gold  
RHEINZINK-artCOLOR® moss-green  
RHEINZINK-artCOLOR® nut-brown  
RHEINZINK-artCOLOR® blue  
RHEINZINK-artCOLOR® tile-red



- 1 QUALITY ZINC Certificate
- 2 TÜV Certificate ISO 9001:2008, ISO 14001:2004  
and ISO 50001:2011
- 3 IGEF Certificate
- 4 IBU Environmental Declaration

RHEINZINK-CLASSIC, RHEINZINK-prePATINA and RHEINZINK-artCOLOR are registered trademarks of RHEINZINK GmbH & Co. KG



# prePATINA

prePATINA



## THE WORLD'S ONLY NATURALLY PRE-WEATHERED SURFACES

Only RHEINZINK has a special process in which the blue-grey or graphite-grey colour of the natural patina is achieved naturally in production. As the inventors, we called this unique pickling process "pre-weathering". Virtually imperceptible to the human eye, atmospheric influences over time create a natural protective patina that reliably protects the product. In production, any use of artificial coatings, varnishes or phosphating is avoided completely. The prePATINA line products are the only ready-made natural surfaces in the entire global zinc construction market.

### Surface qualities:

RHEINZINK-prePATINA® blue-grey

RHEINZINK-prePATINA® graphite-grey

Natural weathering compensates for any installation-related scratches. Only the RHEINZINK-prePATINA and the RHEINZINK-CLASSIC lines offer this self-healing effect. They are environmentally friendly and absolutely maintenance-free.

**100% SELF-HEALING**

**100% MAINTENANCE-FREE**

**Only available from RHEINZINK**



RHEINZINK GmbH & Co. KG  
Postfach 1452  
45705 Datteln  
Germany

Tel.: +49 2363 605-0  
Fax: +49 2363 605-209

[info@rheinzink.de](mailto:info@rheinzink.de)  
[www.rheinzink.com](http://www.rheinzink.com)